

Role of Environmental Health Specialist

David Brown REHS

- * Standard environmental lead investigation
- * Description of environmental and clinical staff communication

Contact Information

W. David Brown, REHS

Surveillance Coordinator

NC Department of Health and Human Services

DPH - Environmental Health Section

919 218 5460 office

919 841 4015 confidential fax

w.david.brown@dhhs.nc.gov

1632 Mail Service Center

Raleigh, NC 27699-1632

The sell for an investigation:

Many EBL cases never get an investigation due to refusal by the parents or lost to follow up!

WHY?!



Why do parents refuse?

Make the Case

- ✓ health of your child
- ✓ health of your other children, extended family
- ✓ neighborhood playmates
- ✓ are you planning to have another child or adopt?
- ✓ Long-term health implications for normal cognitive development (IQ, speech, growth, self-control, ability to focus, classroom success, future life-time earnings, genetic damage)

Please Verify Patient Contact Information

Demographic data

Medicaid and Social Security Numbers

Mailing address

Supplemental addresses i.e. joint custody, grandparent's home, child care provider etc.

Directions to home and physical address

Working telephone numbers and alternate contacts, for a relative, neighbor or friend

Verify language ability and the need for an interpreter.

Enter the information into NCLEAD

Better outcomes are achieved when clinical and environmental services operate in close coordination with the child's family, health care provider, social services, housing authority, non-profit agencies, and faith-based organizations.

Clinical and Environmental Coordination

SAGE ADVICE

ALWAYS:

Leave itinerary with your office

Don't go alone

Reconfirm the appointment

Make sure you have contact numbers for your team

Park your car where it is visible from the road

Where identification badge

Look for dogs before opening car door

Once in the house make sure you have an exit plan

Never sit on upholstered furniture

Take fully charged cell phone with you

Be culturally respectful - take off your shoes and sit on the floor

Have empathy

Make sure they understand why you are there and get signed consent

IF you see serious code violations report it

IF you see or suspect any child abuse or neglect report it

You may see drugs and weapons - stay calm

The Interview



During an investigation we ask a lot of questions and look through things but it is all an attempt to find the sources of lead exposure and stop it now!

JAN JACKSON, REHS

We use your clinical notes to guide the questions and investigation.

We ask the parent, babysitter, or other caregiver.

We stress the importance of keeping appointments to monitor the child's health and blood lead levels.

We discuss nutrition, proper diet, food and water supplies.

We review the importance of good hand hygiene before snacking, eating and bedtime.

All too much?

Focus small and on the most important things:

1. Washing hands, face, feet before snacking or eating
2. Balanced diet - vitamins - need iron and calcium
3. Flush your tap before using the water
4. What does your child like to mouth on - no
woodwork, miniblinds, or eating soil or dirt

*Focus small and on the most
important things!*

Important areas to monitor and clean regularly

Porch

Family room

Kitchen

Bedroom

Outside play

Clean important areas!

Investigations are a team activity. **DO NOT GO ALONE.**





Elizabeth Fridley and Nellie Benitez - home visit

Survey the property noting the location of outbuildings, wells/springs, play areas, workshops, burn pits, junk storage, batteries, cars, machinery, neighboring yards, and the home's exterior and interior, ASK PERMISSION TO OPEN DOORS AND ENTER ROOMS. ALWAYS ASK ABOUT AND LOOK FOR DOGS. NO MATTER WHAT THE OWNER SAYS, THEIR DOG WILL BITE YOU.



Carl Kivett REHS
Chatham County

PLAY AREAS





PORCH PLAY

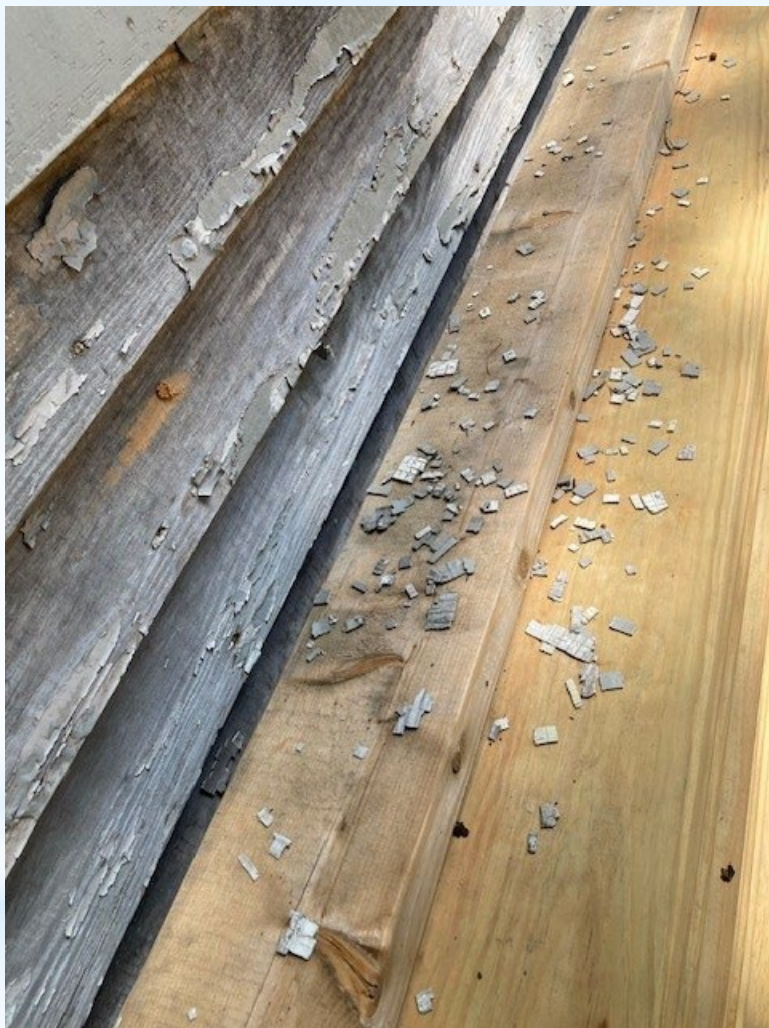




Playground Equipment

DETERIORATED PAINT







FRICITION/IMPACT





MOUTHING/TEETHING









MINIBLINDS

Miniblind Testing







FOOD CONTAINERS



SPICE SAMPLES



CEREMONIAL ITEMS





XRF TESTING

Charging batteries
Calibration
Forms
Testing
Don't drop it







DUST
SAMPLING



SOIL



WATER

Create a safe space, an area that you can be reasonably sure is free of lead poisoning hazards.

Interim controls - practical, use materials on hand i.e. wet wiping windows and floors, removing shoes, changing play areas, coil stock.

Start small - work out,

Smooth easy to clean surfaces

Leave cleaning supplies

No shaming

Education is the key

Environmental investigation report

Remediation

Educational material

Connect to resources



THE CHATHAM TEAM

Elizabeth Fridley RN, Nellie Benitez Out Reach Coordinator, Lisa Morgan REHS